

SURREY HOUSE

3705

The three-car garage and breezeway help make the initial first impression in this lovely country home. Set at right angles to the house, the garage, breezeway, and welcoming courtyard are all designed to make a delightful impact on first time visitors.

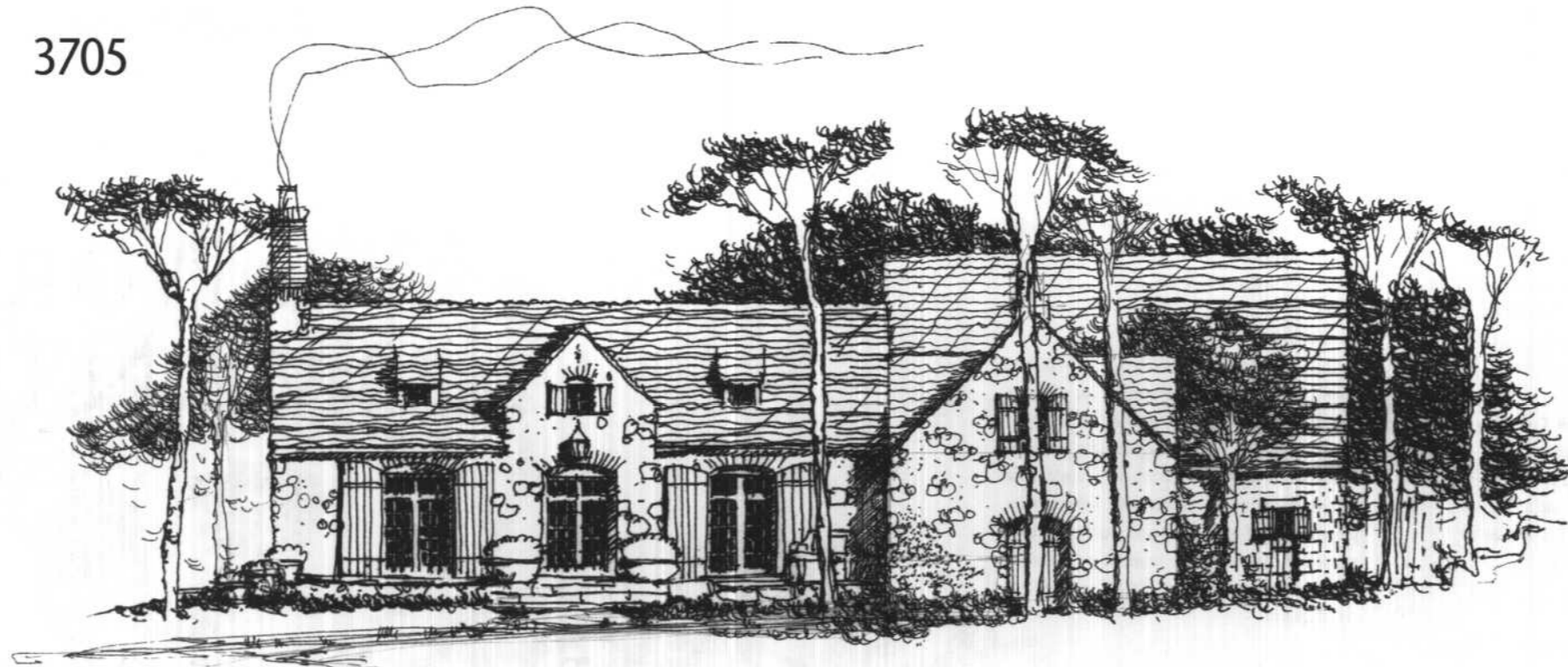
Walking over the threshold of the entry, the first glance is equally impressive. The combined living room, dining room, and kitchen suggest an open, airy mood, and are outlined by exposed timbers that frame the massive fireplace at the living room end of the space. The dining bar serves to separate the kitchen from the dining area but also makes a delightful place for serving casual hors d'oeuvres or visiting with family members and friends while preparing meals.

A clever loft above the kitchen offers privacy, but still provides an unencumbered view of the area below. This is a great place for children to play, or teenagers to study, without feeling isolated from the rest of the family.

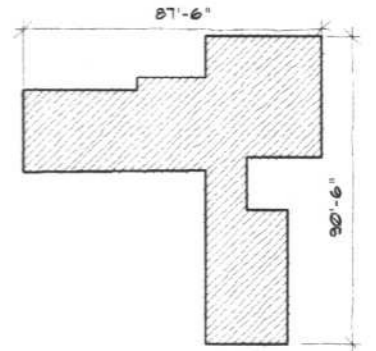
Seclusion is the goal of the design in the master suite, while the sitting room still serves to preclude and shelter the master suite from the public. The two upstairs bedrooms also have more space, as does the compartmented bath, that serves them both.

This is a perfect home for a growing family or a family with children in transition from high school to college or marriage. The generous space above the garage has its own bath and could even accommodate a small kitchen area, making this a quiet apartment for older children, aging but ambulatory parents, or guests who like ultimate privacy.

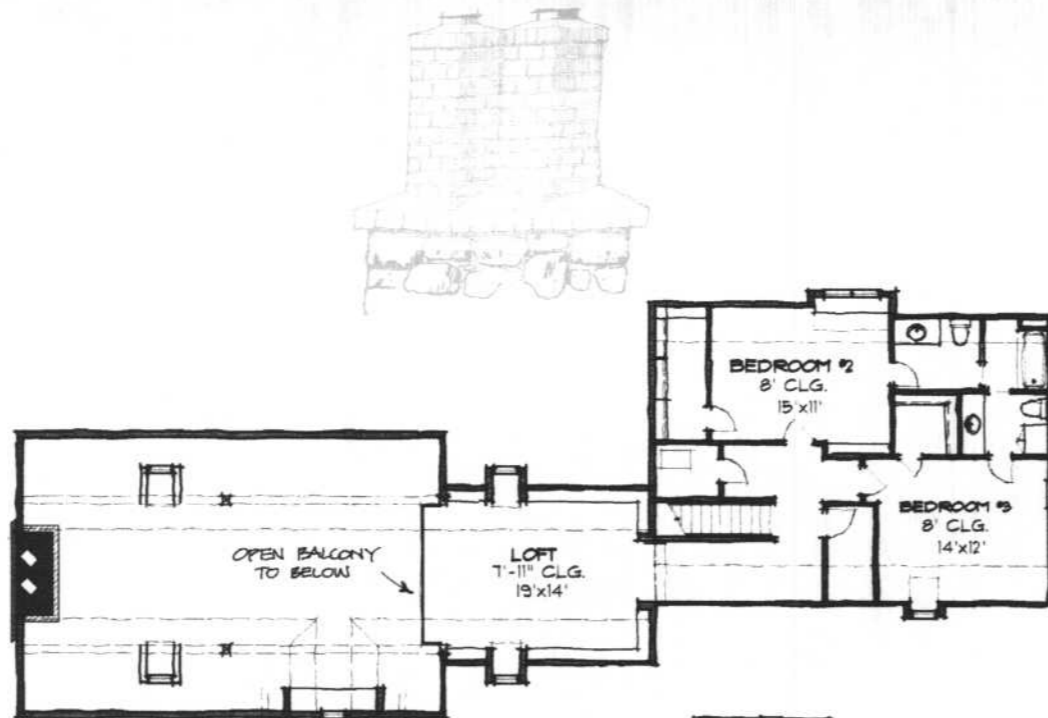
Even the breezeway suggests the future addition of screens, for a screened-in porch to be enjoyed on lazy summer evenings.



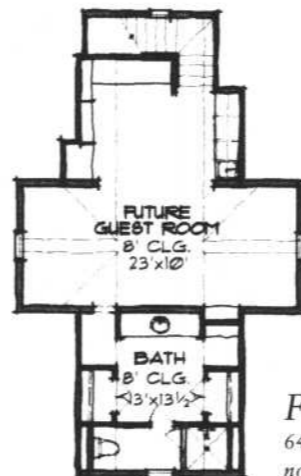
Please note:
In an effort to continually upgrade and/or improve our plans, Homes of Elegance reserves the right to make alterations to this plan.



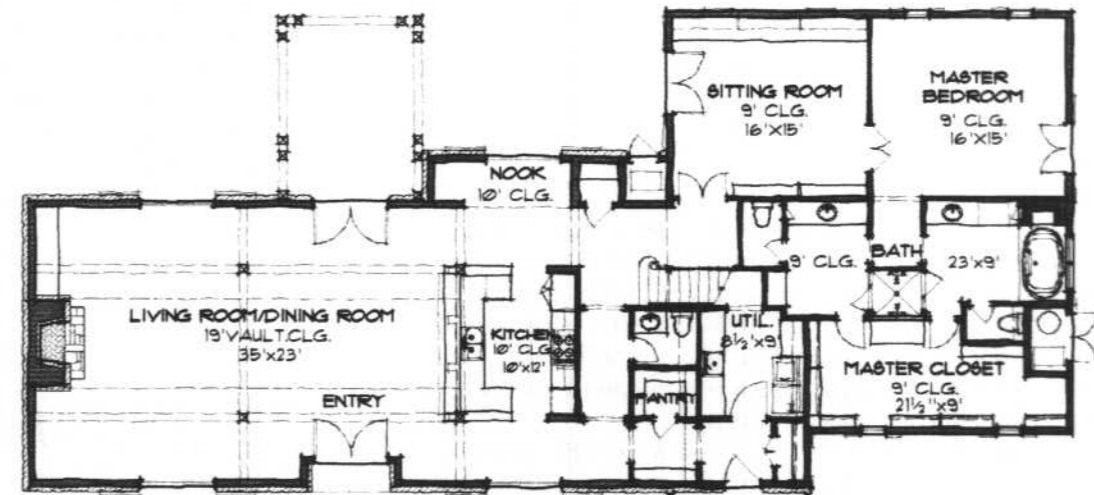
Dimensions over wood frame
(Does not include any veneer)



Upper Level Floor Plan
1130 S.F. (Upper Level)



Future Room
645 S.F.
not included in total



Main Level Floor Plan
2575 S.F. (Main Level)
3705 S.F. Total

